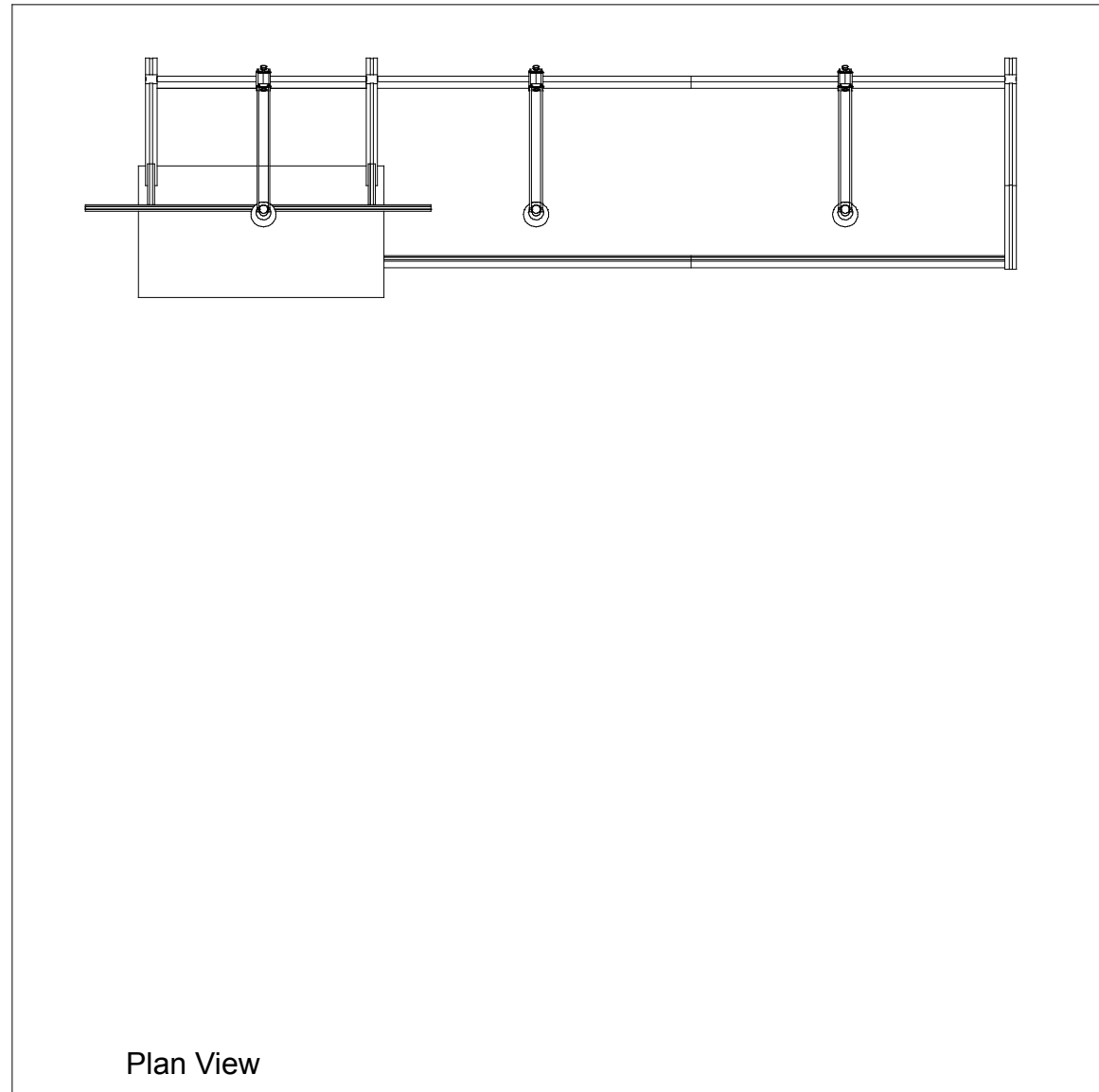
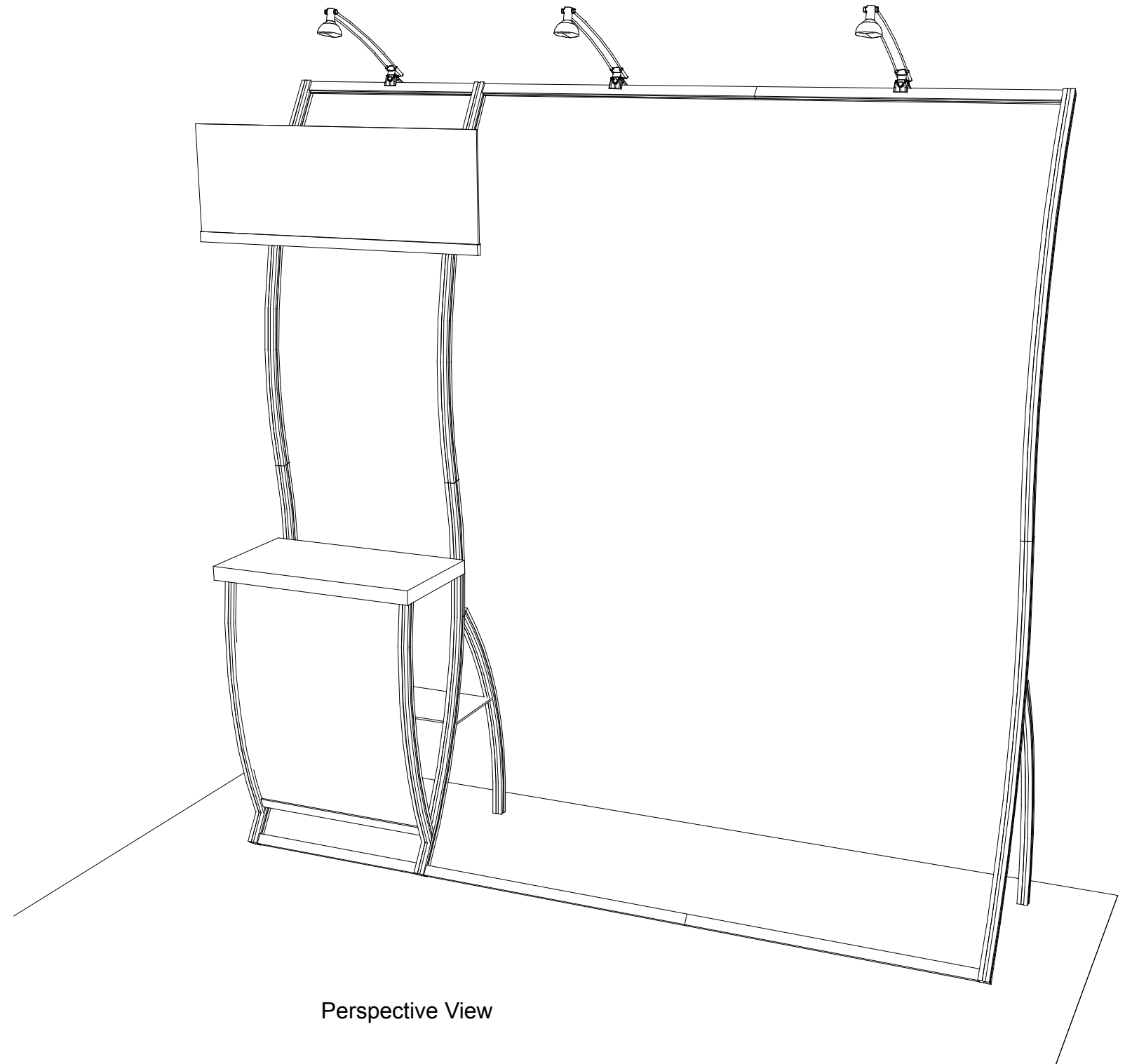


Perfect 10 Hybrid Displays



10'



WHEN DISASSEMBLING TIGHTEN ALL KNOBS TO PREVENT LOSS DURING SHIPPING

Item	Qty.	Description
1	1	Left Leg Assembly
2	1	Middle Leg Assembly
3	1	Upper Curved Vertical
3a	1	Upper Curved Vertical
4	2	23"w Horizontal
9	1	Side Assembly
10	1	Side Assembly
11	2	Horizontal Extrusion

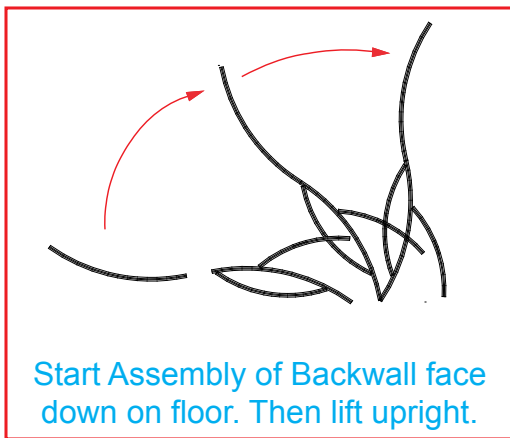
Steps:

NOTE: Assembly may be easiest if assembled face down on floor then lifted upright.

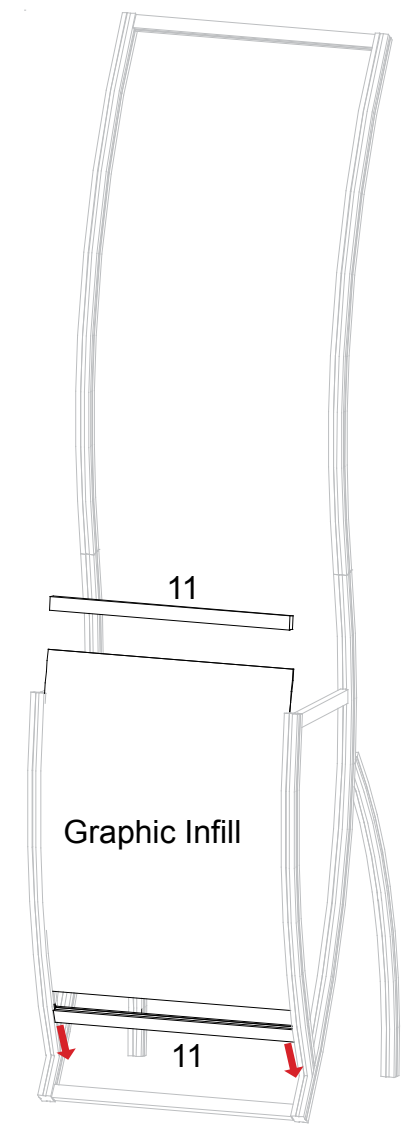
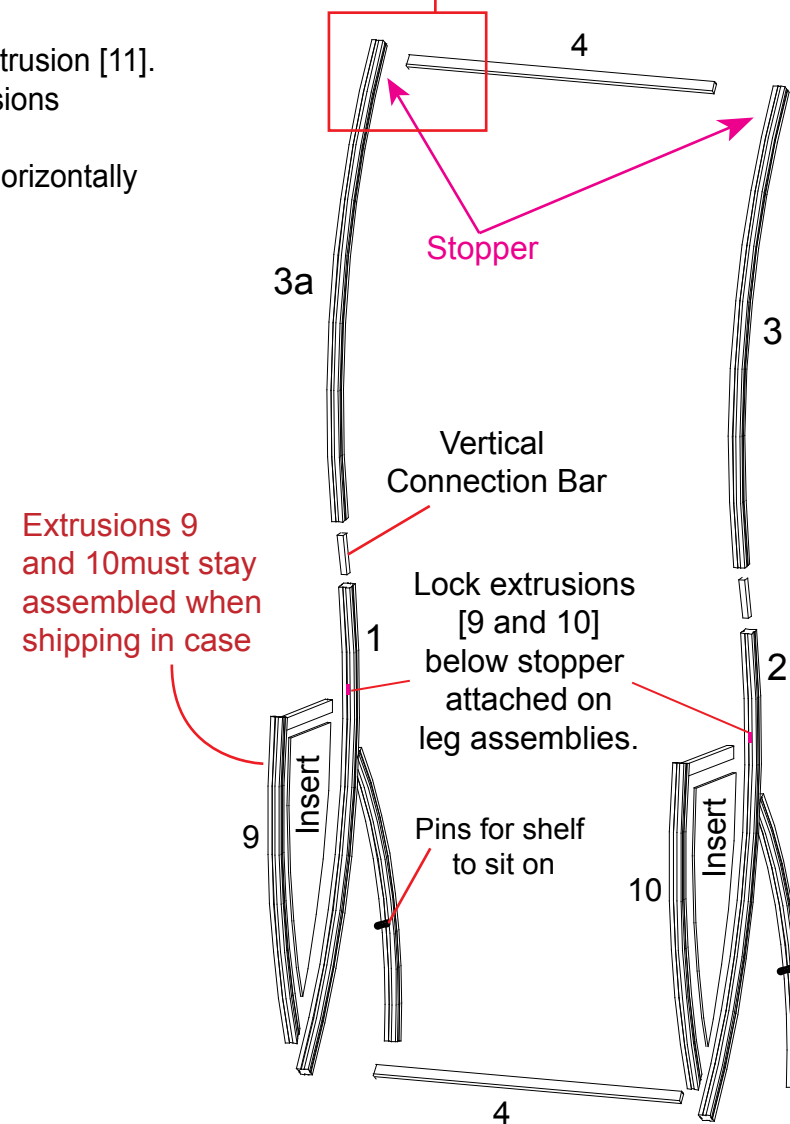
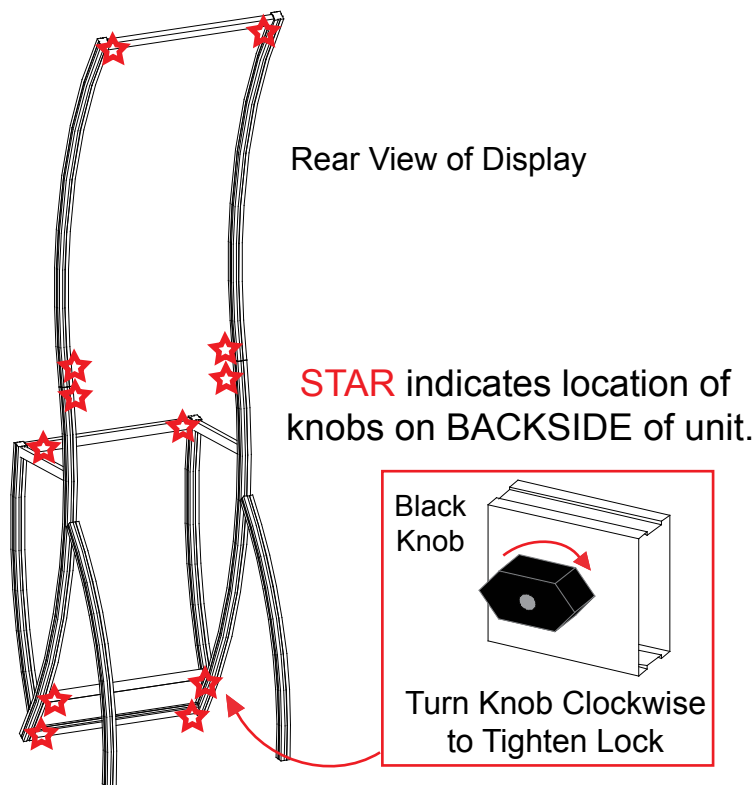
- 1) Connect vertical leg assemblies [1 and 2] together by connecting horizontal extrusion [4] between assemblies tightening BLACK knobs on backside of extrusion making sure velcro faces toward BACK and placing it about one inch up from bottom and tightening.
 - 2) Connect vertical extrusions [3 and 3a] to leg assemblies [1 and 2] using vertical connection bar as shown.
 - 3) Connect upper horizontal extrusion [4] between verticals [3 and 3a] placing it atop stoppers.
 - 4) Attach side assemblies [9 and 10] to leg assemblies [1 and 2] making sure inserts are in place as shown, then connect horizontal extrusion [11] into grooves of curve extrusions [9 and 10].
 - 5) Slide infill between curve extrusions [9 and 10] and atop extrusion [11].
 - 6) Attach upper horizontal extrusion [11] between curve extrusions [9 and 10] and atop insert.
- NOTE: Make sure velcro faces toward back & knobs face horizontally as shown in detail.**

**** Various Accessories Available ****

NOTE: When assembling horizontals they should be placed approximately one inch from TOP and BOTTOM.



Step stool may be required for assembly.



WHEN DISASSEMBLING TIGHTEN ALL KNOBS TO PREVENT LOSS DURING SHIPPING

866.652.2100

Item	Qty.	Description
5	1	End Leg Assembly
6	1	Upper Curved Vertical
7	1	69" w Horizontal
8	1	69" w Horizontal

Steps:

NOTE: Assembly may be easiest if assembled face down on floor then lifted upright.

- 1) Connect vertical extrusion [6] to leg assembly [5] using vertical connection bar as shown.
- 2) Connect horizontal extrusions [7 and 8] between vertical assemblies by tightening BLACK knobs on backside of extrusion making sure velcro faces toward BACK.

NOTE: Make sure velcro faces toward back and knobs face horizontally as shown in detail.

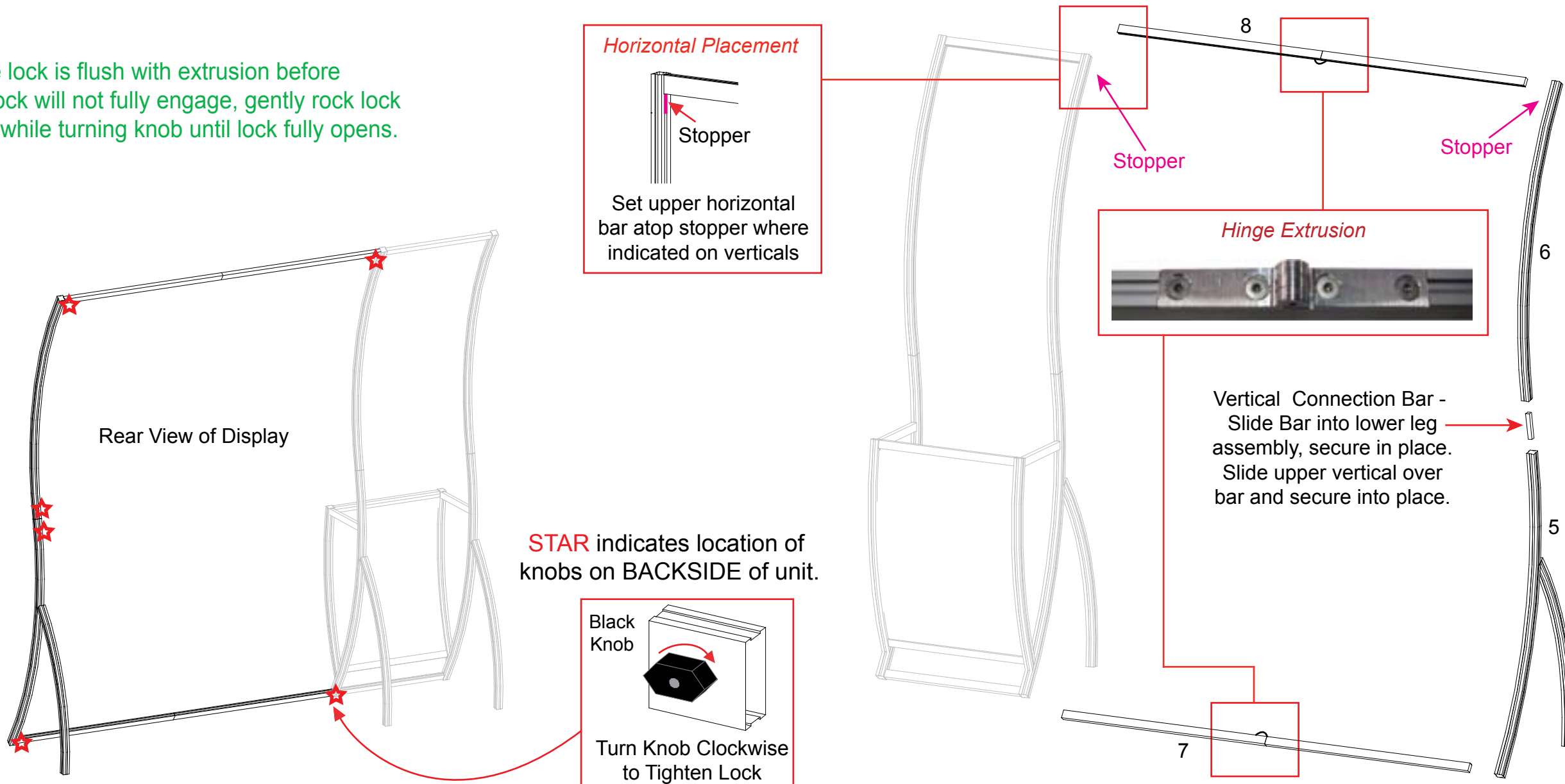
**** Various Accessories Available ****

NOTE: When assembling horizontals they should be placed approximately one inch from TOP and BOTTOM.

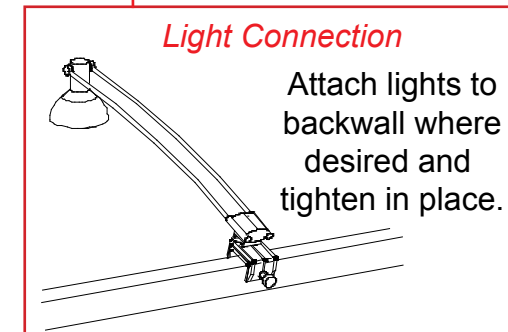
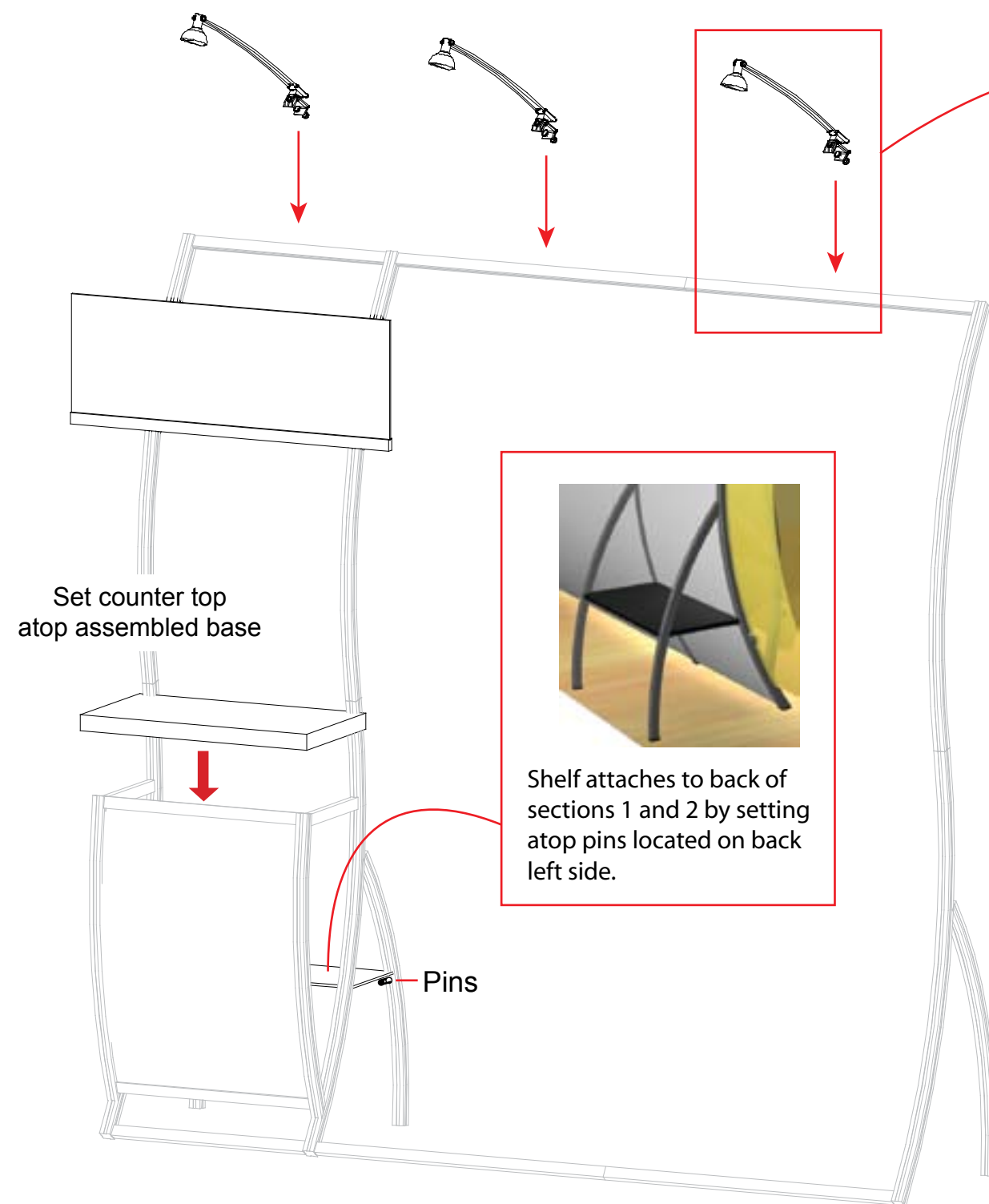
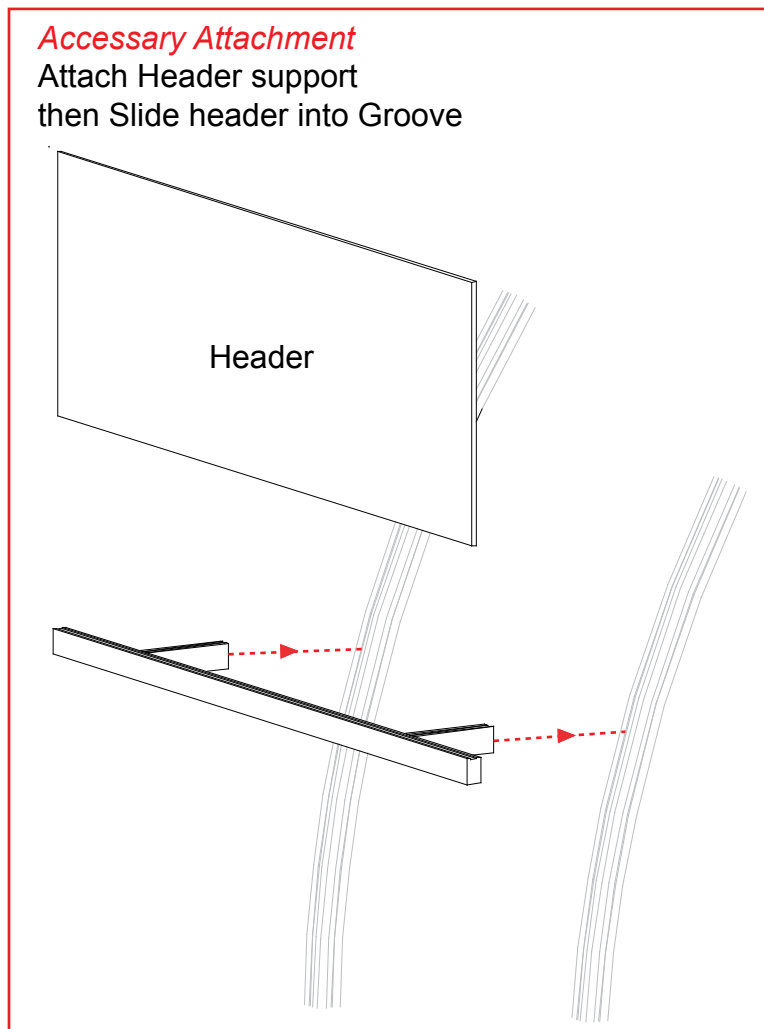


NOTE:

Make sure the lock is flush with extrusion before tightening. If lock will not fully engage, gently rock lock and extrusion while turning knob until lock fully opens.

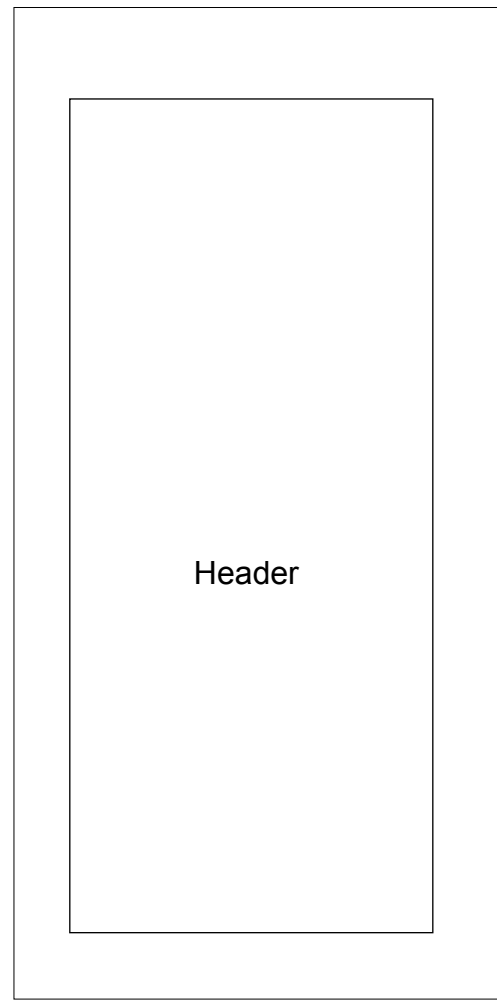


WHEN DISASSEMBLING TIGHTEN ALL KNOBS TO PREVENT LOSS DURING SHIPPING

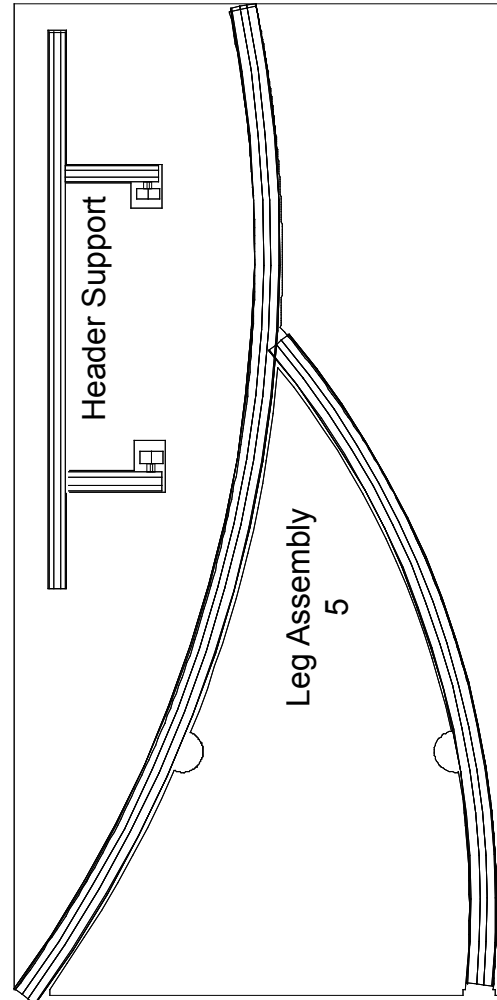


WHEN DISASSEMBLING TIGHTEN ALL KNOBS TO PREVENT LOSS DURING SHIPPING

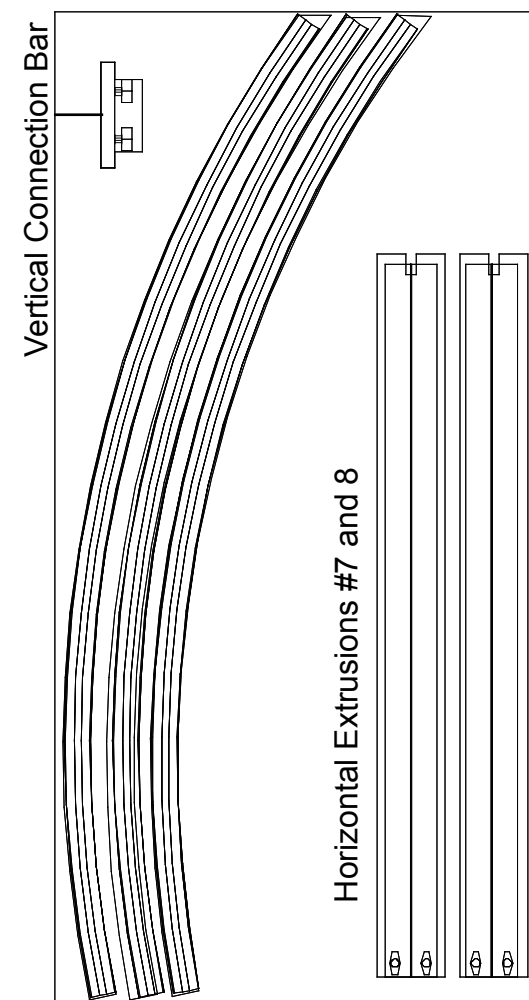
Top View of Each Level



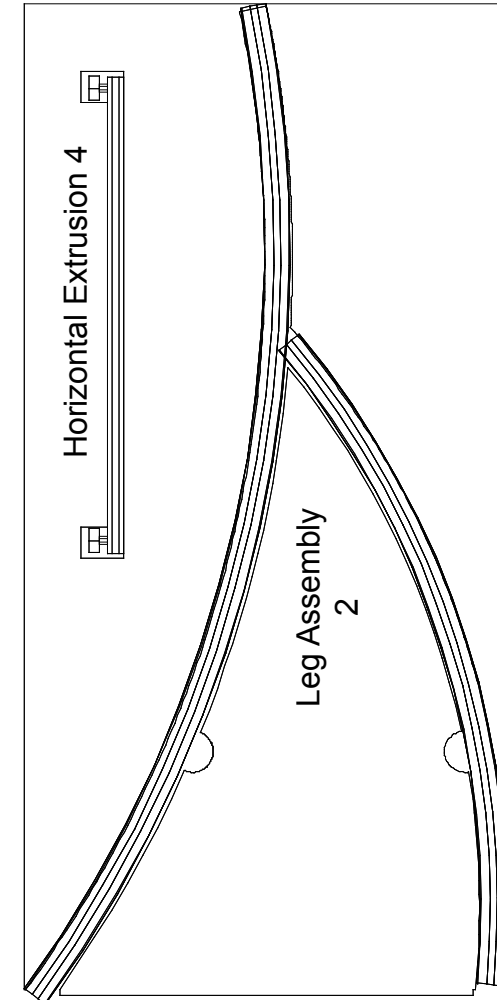
Level 1



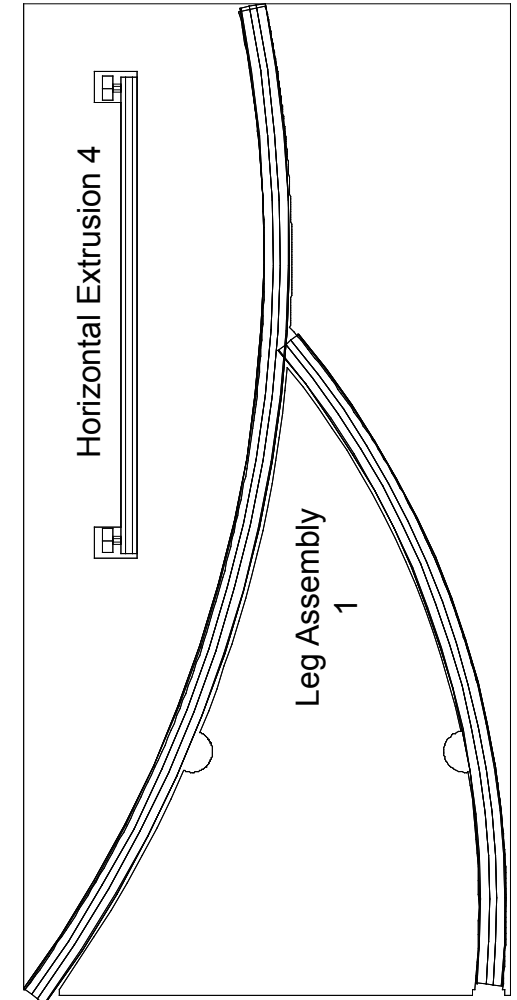
Level 2



Level 3



Level 4

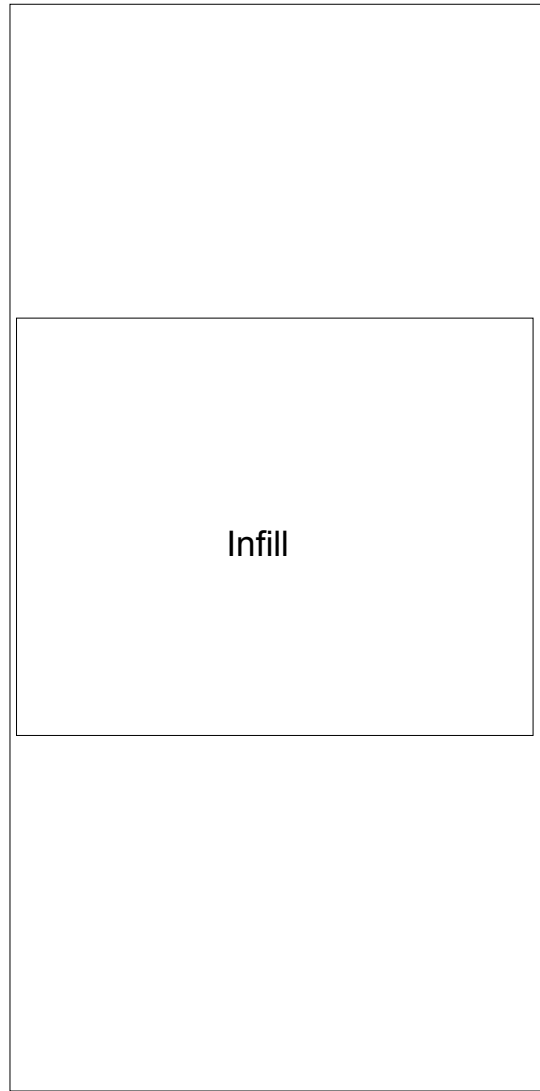


Level 5

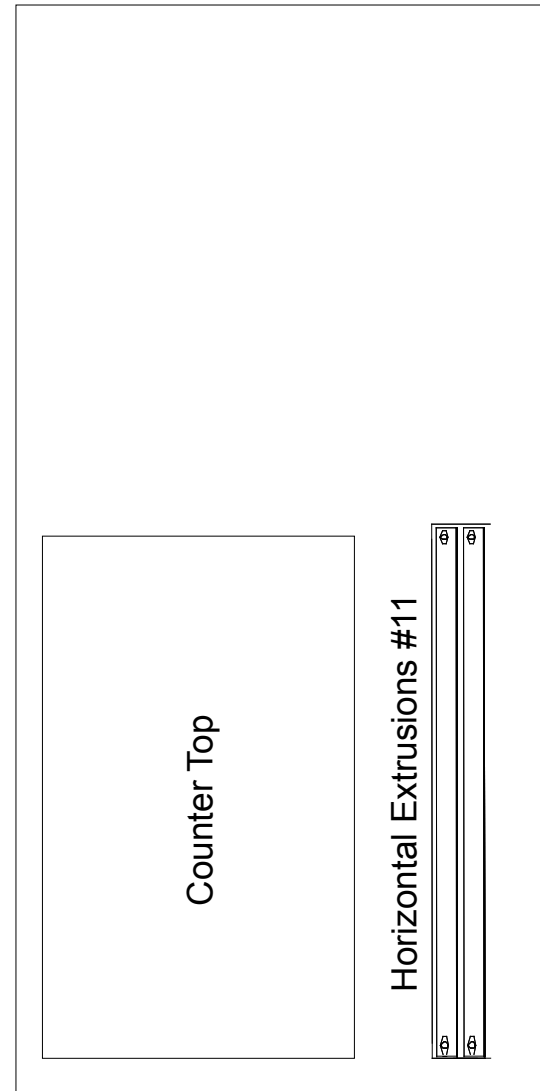
- Additional Items:**
- Setup Hardware
 - Graphic
 - (3) Lights

WHEN DISASSEMBLING TIGHTEN ALL KNOBS TO PREVENT LOSS DURING SHIPPING

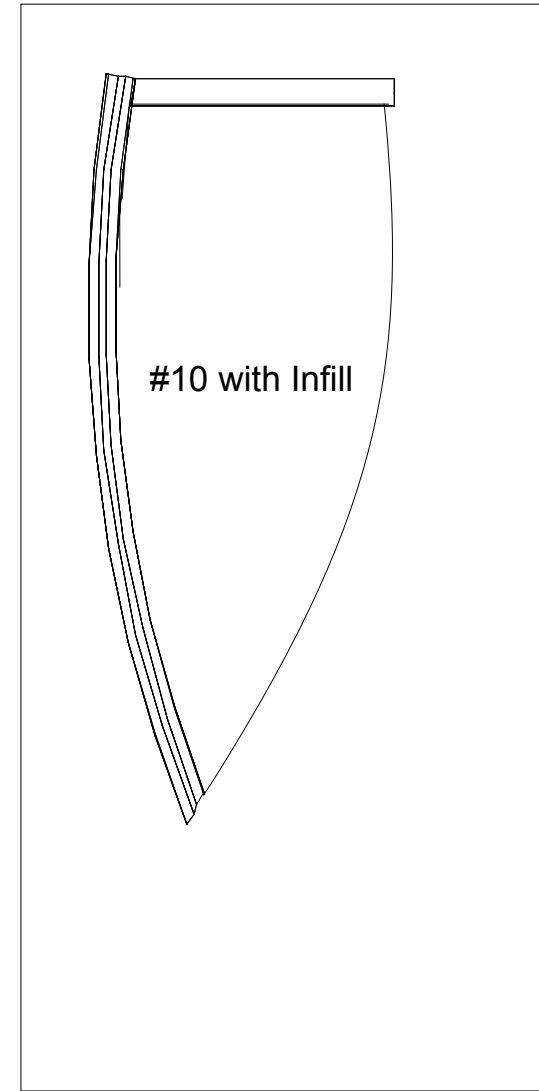
Top View of Each Level



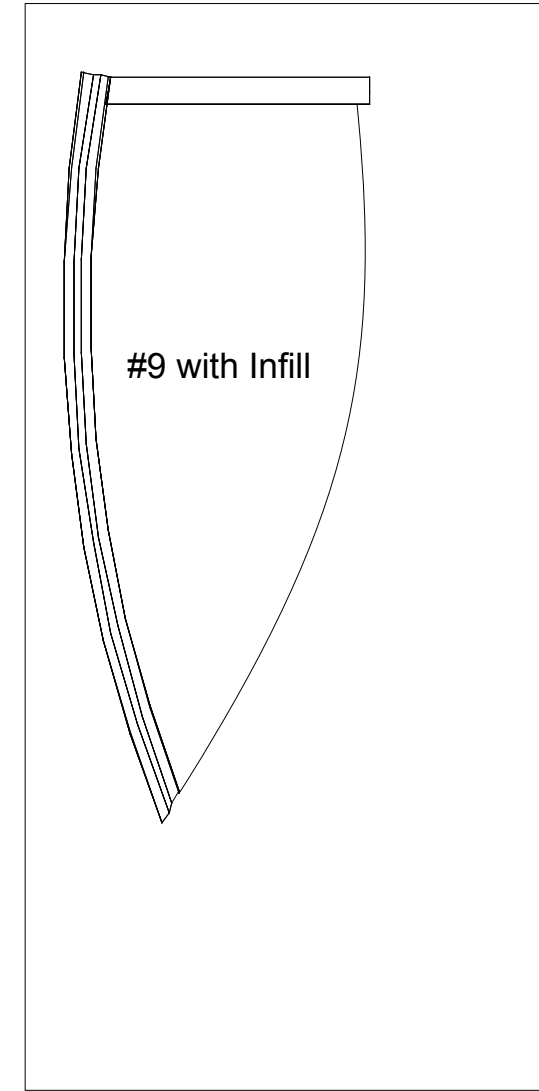
Level 1



Level 2



Level 3



Level 4

WHEN DISASSEMBLING TIGHTEN ALL KNOBS TO PREVENT LOSS DURING SHIPPING